

Application and Features

Advantages of GX500c in a 5G-Embedded House

Activate Your New 5G House!



TRITOM[®]

Tri Cascade Inc.
Taking Internet of Things Further

www.tricascadeinc.com



A TRITOM GX500g IoT 5G Modem in a 5G-Embedded House offers numerous advantages, enhancing connectivity, efficiency, and smart home integration. Here are some key benefits.

TRITOM GX500g IoT 5G Modem



Superior Internet Connectivity

High-Speed Internet:

- Provides access to ultra-fast 5G internet speeds, significantly surpassing traditional broadband capabilities.
- Ideal for high-bandwidth activities such as HD video streaming, online gaming, and large file downloads.

Low Latency:

- Ensures real-time responsiveness, crucial for applications like video conferencing, online gaming, and remote work.
- Enhances the overall internet experience by reducing delays and buffering times for smart IoT devices.



Enhanced Network Reliability

Stable Connection:

- Offers a more stable and reliable connection compared to traditional wired networks, less susceptible to outages.
- Acts as a robust backup network, automatically switching to 5G in case of wired network failure.

Seamless Connectivity:

- Provides consistent internet access across all areas of the home, even in locations where wired connections are impractical.



Smart Home Integration

Device Compatibility:

- Connects various smart home devices, such as smart thermostats, security systems, and appliances, enabling seamless integration and control.
- Supports many devices simultaneously, ensuring smooth operation for all connected devices.

Remote Access and Control:

- Allows users to control and monitor their smart home devices remotely via smartphones or tablets, leveraging the 5G network for anytime, anywhere access.
- Facilitates real-time monitoring and control of home security systems, providing instant alerts and high-definition video streaming.



Improved Home Office Efficiency

Enhanced Remote Work Capabilities:

- Provides reliable, high-speed internet essential for remote work, supporting video conferencing, cloud collaboration, and large file transfers.
- Low latency ensures smooth and efficient remote desktop control and real-time collaboration.

Secure Connectivity:

- Offers advanced security features, reducing the risk of network attacks and data breaches.
- Ensures the safety and privacy of data, critical for remote work and online transactions.



Future-Proof Technology

IoT and Smart City Integration:

- Supports a wide range of IoT devices, enabling more complex and intelligent home automation scenarios.
- Integrates seamlessly with smart city and smart community infrastructure, enhancing the overall smart living experience.

Support for Emerging Technologies:

- Facilitates the use of emerging technologies such as Virtual Reality (VR) and Augmented Reality (AR) within the home, providing new entertainment and educational opportunities.

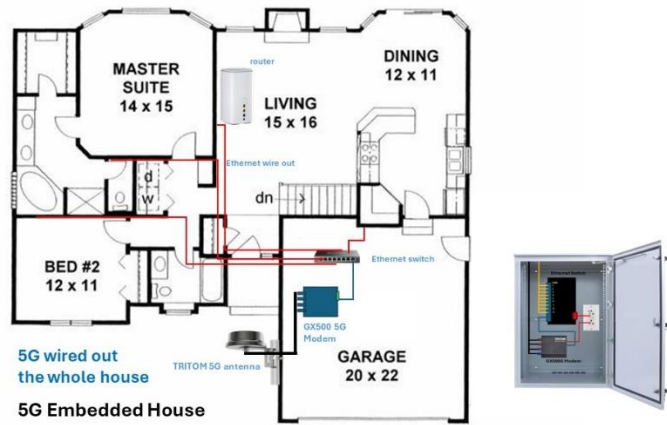


Ease of Installation and Management

Simple Installation:

- Typically designed as plug-and-play devices, requiring minimal technical expertise for setup. When a new homeowner receives their new house, simply use the mobile app to activate their own 5G Internet and then plug the router to the wall to have instant high speed Internet service.
- Eliminates the need for extensive wiring
 - reducing installation time and costs.

5G Embedded House concept and diagram



Network RJ45 jack



5G box in the garage



5G modem and network switch box



Outdoor 5G antenna installation





User-Friendly Management

- Offers intuitive management interfaces for easy configuration and monitoring of the home network.
- Supports remote diagnostics and troubleshooting, enabling efficient network management and optimization.

Conclusion

In summary, a TRITOM GX500G in a 5G-Embedded House offers substantial advantages, including superior internet connectivity, enhanced reliability, seamless smart home integration, improved remote work capabilities, future-proof technology, and ease of installation and management. These benefits collectively enhance the home's functionality, efficiency, data security and user experience.

